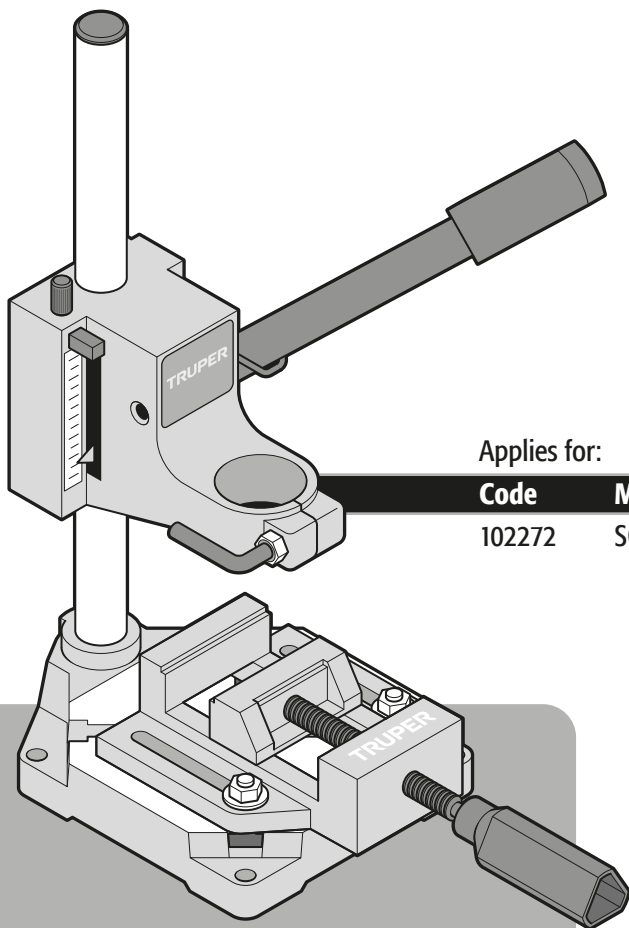


Manual

Drill stand

0" - 2 3/8"
Depth Control



Applies for:



Code	Model
102272	SOP-T12

CAUTION



Read this manual thoroughly
before using the tool.



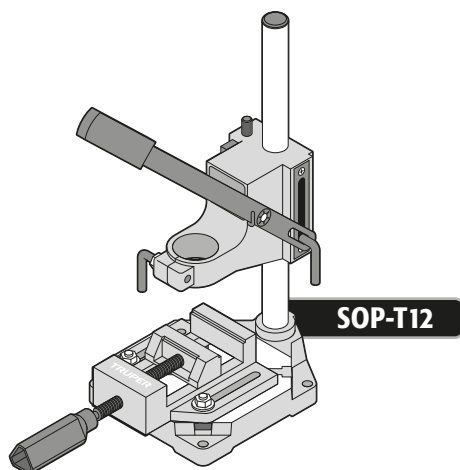
Technical data	3
 General safety warnings for use of drill accessories	3
 Safety Warnings for the use of bench drills	4
Parts list	5
Assembly	5
Parts	6
Preparation	7
Start up	8
Notes	9
Warranty Policy	10

CAUTION

To gain the best performance of the tool, prolong the duty life, make the Warranty valid if necessary, and to avoid hazards of fatal injuries please read and understand this Manual before using the tool.

Keep this manual for future references.

The illustrations in this manual are for reference only. They might be different from the real tool.



SOP-T12

Code •	102272
Description •	Drill stand
Bracket •	Compatible with most 3/8" and 1/2" drills
Depth control •	0" - 2 3/8"
Work height •	14 3/16"
Maximum walrus press opening •	2 1/2"

General safety warnings for use of drill accessories

Keep your work area clean, tidy and well illuminated.

CAUTION Untidy and dark areas cause accidents.



Keep children and others at a safe distance while operating the tool.

WARNING Distractions can cause you to lose control and lead to accidents.



Always be alert, use caution and common sense.

CAUTION Do not let familiarity with the tool distract you while operating it.

Do not use the tool if you are tired, or under the influence of drugs, alcohol or medication.

DANGER A moment of inattention while operating the tool may result in serious personal injury.

Use the tool with all parts in place and in good condition.

WARNING Failure to do so may result in serious personal injury.

Properly secure and support the workpiece.

CAUTION Use clamps and a stable work surface.

Never force the tool.

CAUTION Working within the range for which it was designed ensures better and safer working.



Store the tool in a safe place out of the reach of children.

WARNING Tools are dangerous in inexperienced hands.



Wear the right clothes.

WARNING Loose clothing or long hair can be caught in the mobile parts.



Keep hands away from rotating and/or moving parts.

WARNING Failure to do so may result in serious personal injury such as cuts, burns or crushing.



Use appropriate personal protective equipment.

CAUTION Wear eye protection. Dust mask, non-skid shoes, hard hat and hearing protection.



Do not overreach.

CAUTION Good footing and balance allow better control of the tool in unexpected situations.

Properly secure the accessory to the tool.

CAUTION Do not use accessories without first making sure they are properly attached and secured. Otherwise, they may be thrown at the operator.

Remove any adjusting key before operating the tool.

WARNING Additional tools or wrenches placed on a rotating part of the tool may cause serious personal injury.

Maintain the tool and make sure that it is in proper condition before using it.

CAUTION Carefully check its moving parts, alignment and mounting. Do this periodically. Look for any damaged or malfunctioning parts for immediate repair at a **TRUPER** Authorized Service Center.



Accessories.

CAUTION Use only the accessories or spare parts indicated in these instructions or certified by **TRUPER**.

Select the adequate bit

- Select the bit that is adequate for the material to drill. It will reduce the risk of severe injuries and make the job faster.
- Do not try to use bits that exceed the chuck speed.
- Do not use bit exceeding 7" or extending 6" below the chuck.
- When drilling large diameters never use more than one-piece cutter.
- Never use wire brushes, circular blades, router blades or rotary blades for brushes.

⚠ WARNING • Do not use bits with screw type tip. These bits will lift the work piece and it will start rotating. This can cause severe injuries to the operator.

Stay Alert

⚠ DANGER • Never lean underneath or on the sides of the drill head when running. The moving bit may cause severe injuries.

⚠ WARNING • Remove the material or residues from the area where hot wood shavings may ignite and start a fire.

⚠ WARNING • Wood shavings or even the work piece may shoot out into the drill rotation direction causing kickback. To reduce this possibility support firmly the work piece to the table. Also, when polishing or sanding, try movements against you and not towards you.

⚠ CAUTION • Do not touch the bit or the perforations immediately after drilling. Wait until it cools down to manipulate.

Before Operating the Drill

- Take your time to assess the job and double check you have complied with all the necessary caution warnings before starting to drill.

⚠ WARNING • Fit the bit correctly into the chuck. Remove all the keys from the chuck before starting to drill. If the key is not removed it will shoot out with great speed and cause severe injuries.

⚠ DANGER • Never put in place and / or secure the work piece when the drill is ON. Turn it OFF before making adjustments to prevent severe injuries.

- For pieces that overhang from the work table, support the piece when possible in the left-hand side of the column. Use auxiliary support if needed.
- Before you start drilling turn the drill ON one second to double check none of the mobile parts are vibrating.

While Operating the Drill

- Work with a regular rhythm. Make the perforations in a firm and unhurried way and do not force the drill.
- As the bit is finished drilling the work piece, exercise less pressure and allow it to finish the hole without forcing it too much.

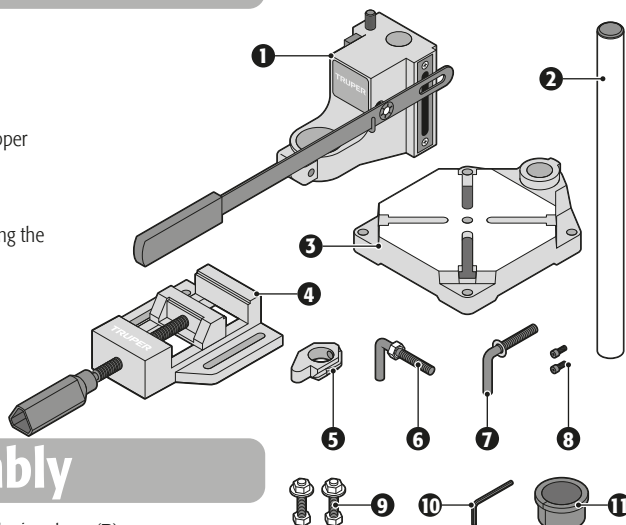
⚠ CAUTION • If the bit gets stuck into the work piece, turn OFF the drill immediately. Disconnect and then, remove the bit from the work piece. Do not try to remove stuck bits by turning ON and OFF the tool.

- Use a lubricant if necessary to reduce friction in the bit.
- Use a dust remover when working with wood.

Parts list

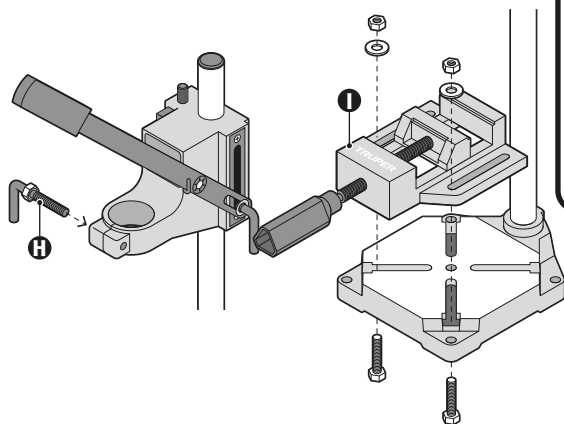
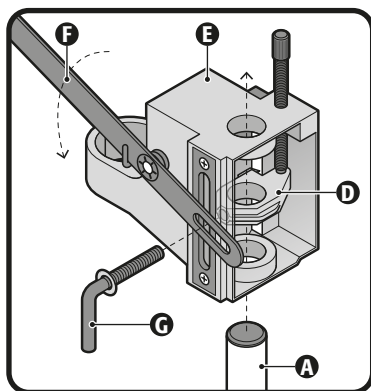
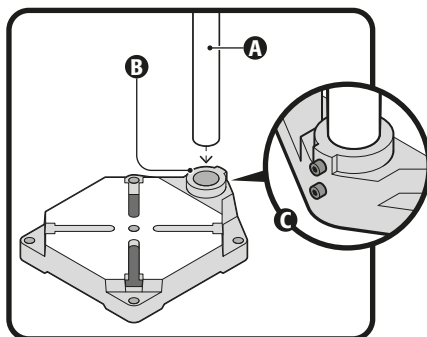


1. Mobile body
2. Column
3. Iron base
4. Walrus press
5. Height indicator ring and depth stopper
6. Clamp opening lever
7. Working height locking lever
8. Screws to secure column (x2)
9. Screws, nuts and washers for securing the walrus press
10. Allen wrench
11. Clamp adapter



Assembly

- Place the column (**A**) in the hole of the iron base (**B**). Insert the column until it is flush with the bottom of the iron base. Secure the column by tightening the two Allen screws with the included wrench (**C**); be careful not to overtighten.
- Assemble the height indicator ring (**D**) to the back of the moving body, ensuring that the indicator arrow is mounted towards the depth scale.
- Place the moving body (**E**) on the column, ensuring that the column passes through the center of the moving body and the height indicator ring.
- Carefully turn the lever (**F**) counterclockwise until the groove at the bottom of the lever is aligned against the thread of the height indicator ring; further at this point the lever should exert a force on the spring. To secure the moving body, place the bolt (**G**) in the thread of the height indicator ring.
- Place the lever (**H**) on the clamp.
- Mount the vise (**I**) on the iron base aligning the guides of the vise against the guides on the base by means of the two sets of screws, nuts and washers included.

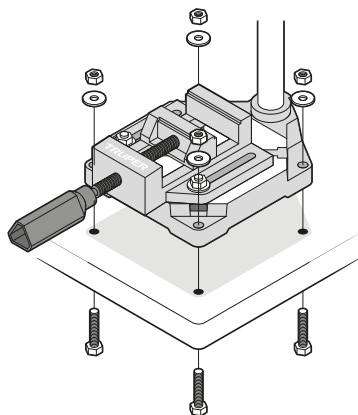


- The base must be fixed by means of four holes and four screws (not included) to a stable, solid, flat and level workbench before starting up.

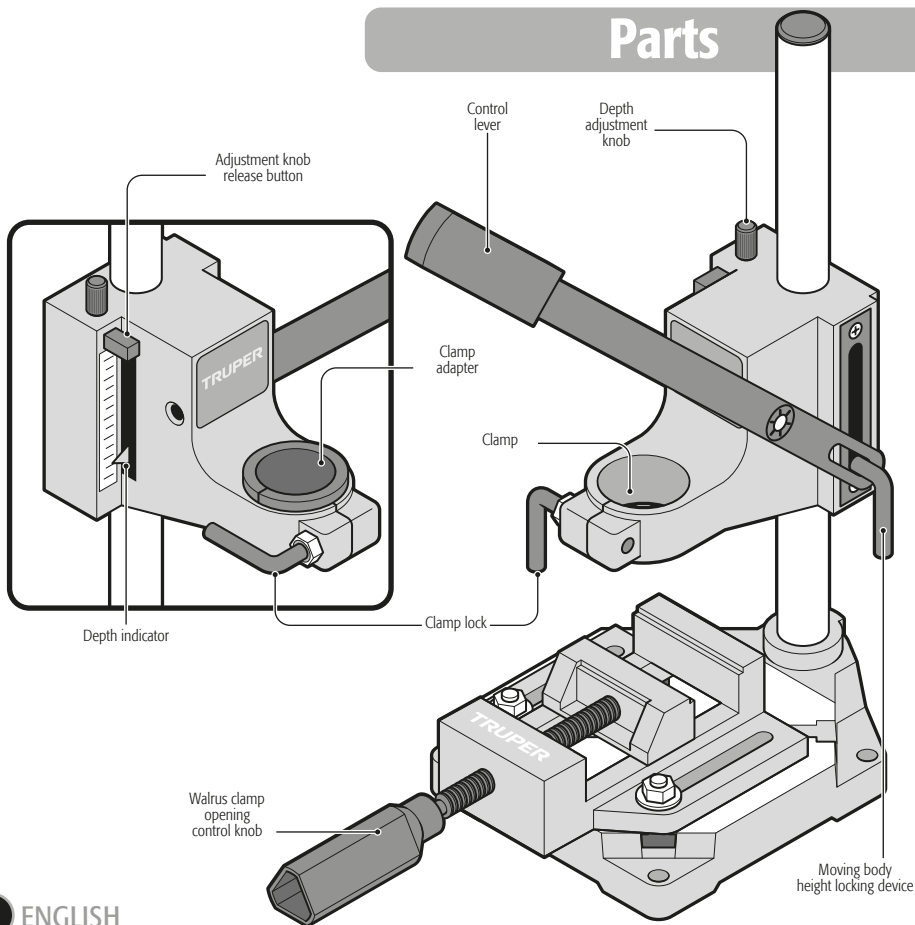
CAUTION To determine the location where the iron base of the stand is to be mounted take the following points into consideration:

- Make sure that a suitable power outlet is nearby.
- If the drill stand is to be permanently mounted on a workbench, make sure the workbench is of adequate height and is strong and stable enough to support the weight of the drill, stand and workpiece.
- Take into account the length and width of the material to be machined, make sure there is enough room at each end and around the machine to accommodate the largest piece of material to be machined safely.
- Mark the four mounting holes on the workbench surface with a pencil.
- Remove the base and drill the four $\frac{3}{8}$ " diameter holes at the marks made.

- Attach the base to the work base with $\frac{3}{8}$ " diameter bolts, nuts and flat washers (not included).
- Gradually tighten each bolt one at a time to seat perfectly to the cabinet base.

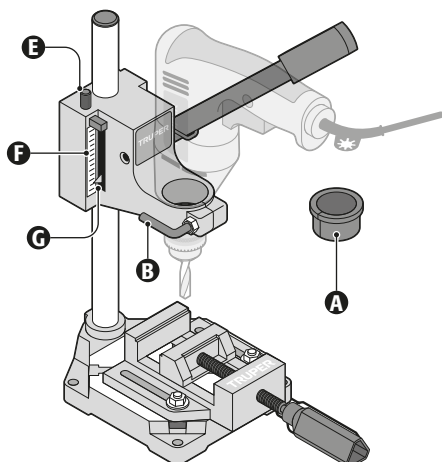


Parts



Drill mounting

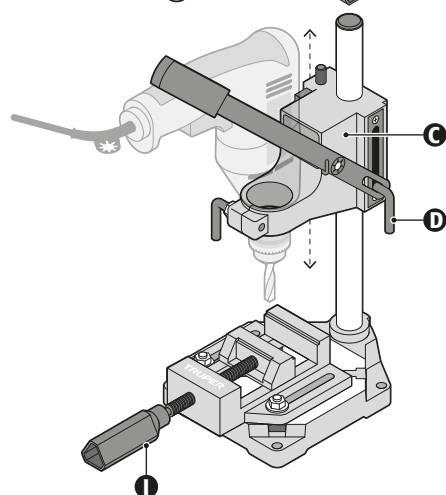
- The mobile body of the tool accepts drills with collars of 43 mm, and collars of 35 mm
- Insert the drill collar into the clamp of the mobile body completely as shown in the picture.
- To use drills with 35 mm collars it is necessary to first place the adapter (A) in the clamp.
- Make sure that the drill is completely inserted and in vertical position inside the clamp and then firmly tighten the lock (B).



Height adjustment of the moving body

Quick adjustment:

- Hold the moving body (C) firmly, loosen the bolt (D) and raise or lower the moving body to the desired position.
- Secure the moving body in position by tightening the bolt (D).
- The moving body can also swing slightly in both directions to accommodate larger workpieces on the base plate; however, be careful not to swing too much to keep the drill shaft within the iron base area.



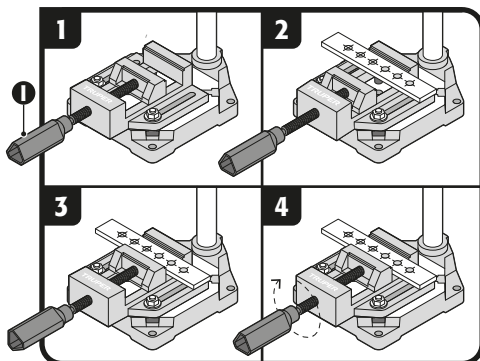
Depth control:

- The drill stand features a fine depth control (E), very useful for repeating holes of the same depth.
- Turn the depth adjustment knob: Left greater depth / Right less depth.
- Check the scale (F) and depth indicator (G) when pressing on the control lever.

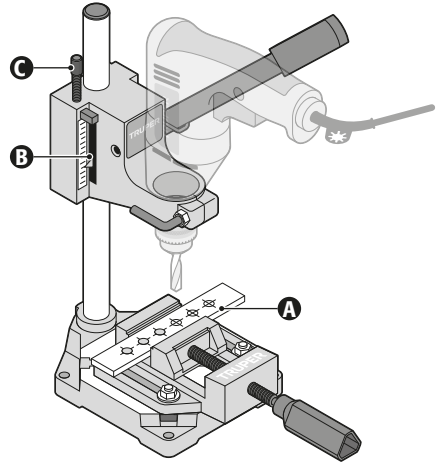
Walrus press

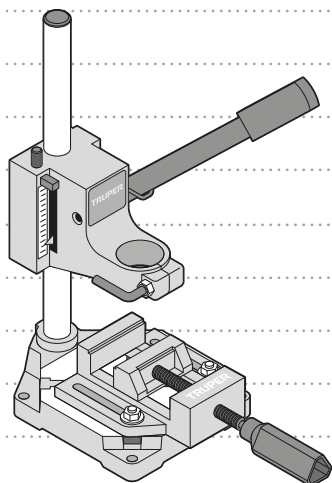
- The holder must never be used without the workpiece being properly clamped.
- To adjust the press:
 1. Turn the knob (I) outward.
 2. Place the workpiece.
 3. Turn the knob clockwise to secure the workpiece.
- In addition to the press supplied, the iron base is designed to accept a variety of clamps that can be secured with bolts, washers and nuts.


⚠ WARNING • If the drill bit becomes jammed in an improperly secured workpiece, injury to the operator may result.



- Secure the workpiece to be drilled in the walrus clamp (**A**).
- Insert the required drill bit into the drill chuck of the drill.
- Lower the lever until the drill hole is drilled.
- To drill a hole of a certain depth:
 1. Lower the lever so that the drill bit contacts the workpiece.
 2. Note the value indicated on the depth scale (**B**).
 3. Advance the drill bit into the workpiece until the pointer on the scale reaches the required depth.
 4. At this point secure the measurement with the depth adjustment knob (**C**).





Code	Model	Brand
102272	SOP-T12	 TRUPER®

Warranty. Duration: 1 year. Coverage: parts, components and workmanship against manufacturing or operating defects, except if used under conditions other than normal; when it was not operated in accordance with the instructive; was altered or repaired by personnel not authorized by **Truper®**. To make the warranty valid, present the product, stamped policy or invoice or receipt or voucher, in the establishment where you bought it or in Corregidora 35, Centro, Cuauhtémoc, CDMX, 06060, where you can also purchase parts, components, consumables and accessories. It includes the costs of transportation of the product that derive from its fulfillment of its service network. . Phone number **800-018-7873**. Made in China. Imported by Truper, S.A. de C.V. Parque Industrial 1, Parque Industrial Jilotepec, Jilotepec, Edo. de Méx. C.P. 54257, Phone number 761 782 9100.



1
YEAR

Stamp of the business. Delivery date: